

ALLEGATO N. 2

FOTO



ALLEGATO FOTO



Foto n. 1: prospetto principale fabbricato



Foto n. 2: prospetto laterale fabbricato



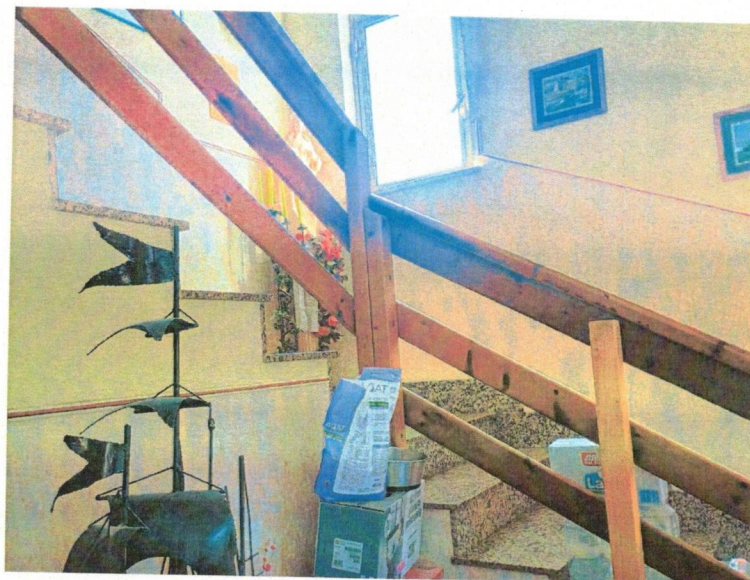


Foto n. 3: vano scala



Foto n. 4: cucina P.T.



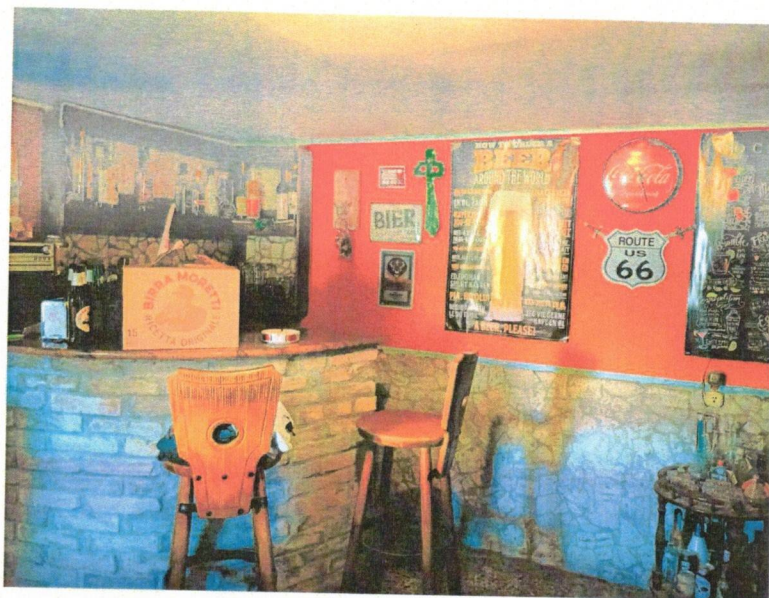


Foto n. 5: veduta soggiorno P.T.

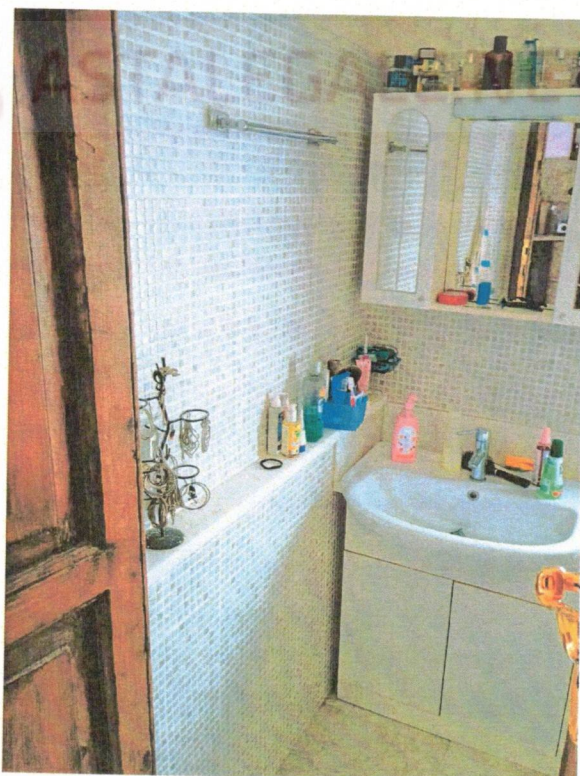


Foto n. 6: veduta bagno P.T.



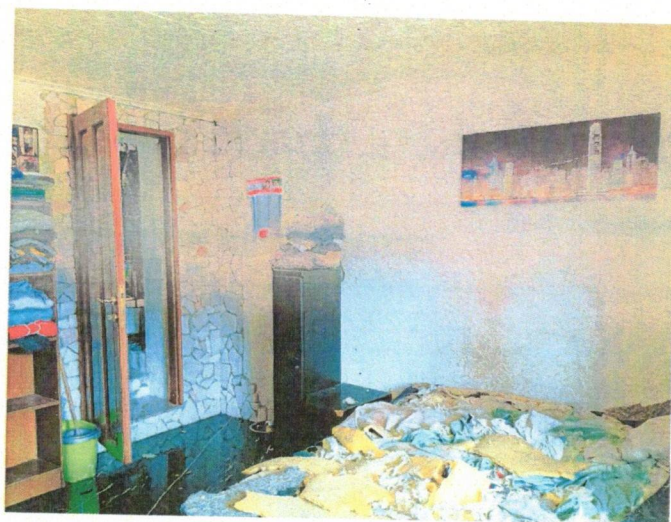


Foto n. 7: veduta camera P.T.

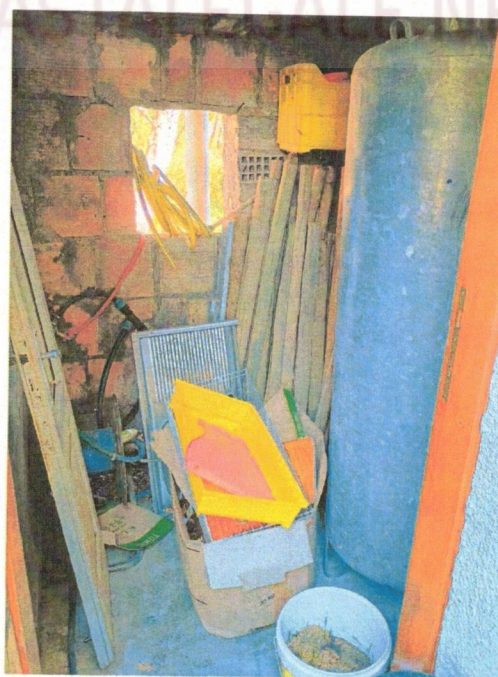


Foto n. 8: veduta ripostiglio P.T.



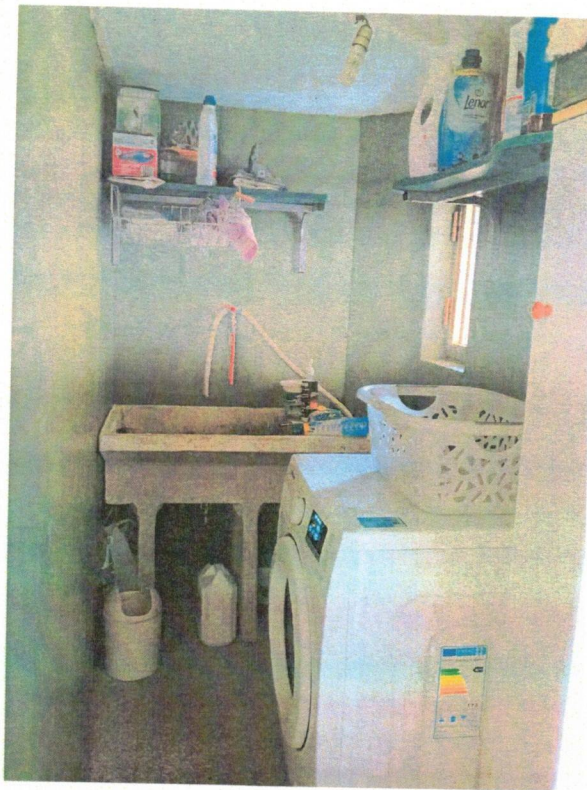


Foto n. 9: veduta lavanderia P.T.



Foto n. 10: veduta cantina P.T.





Foto n. 11: veduta soggiorno P.P.

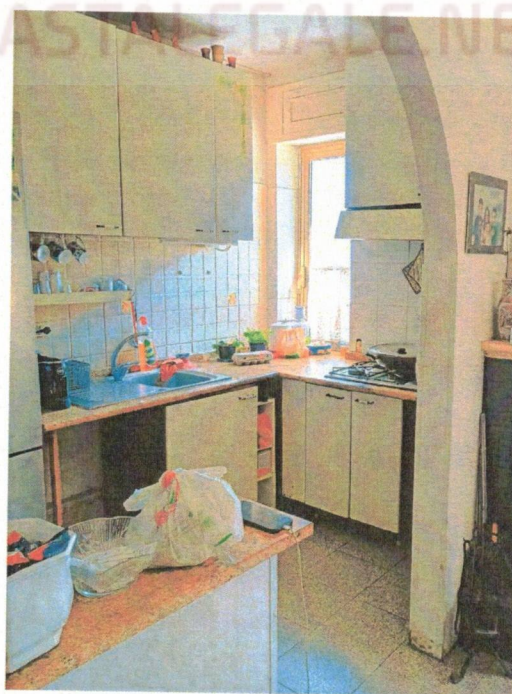


Foto n. 12: veduta cucina P.P.



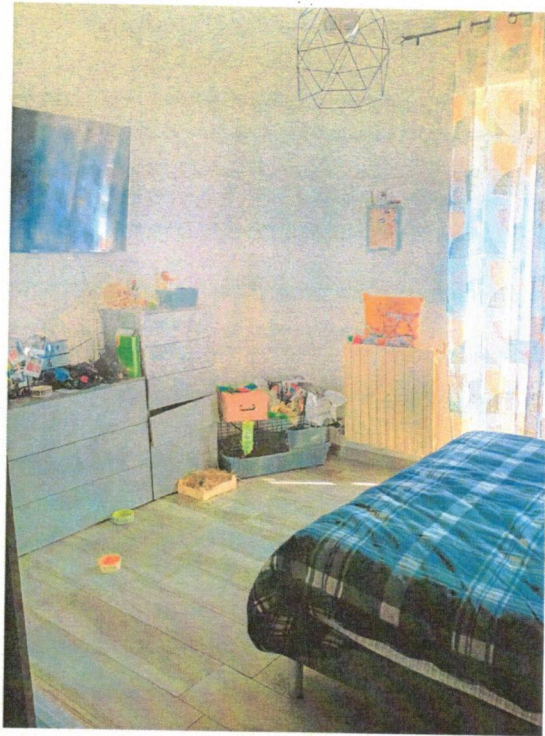


Foto n. 13: camera C2



Foto n. 14: camera C3



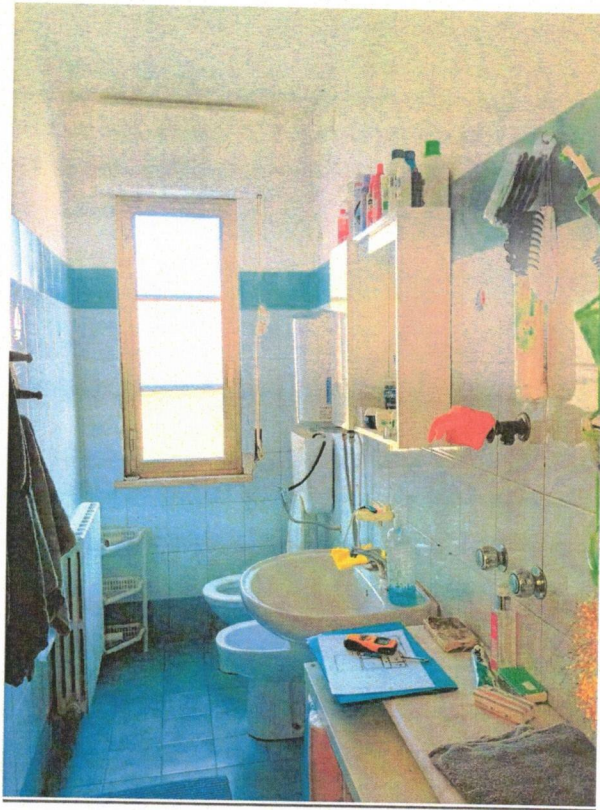


Foto n. 15: bagno B1



Foto n. 16: bagno B2



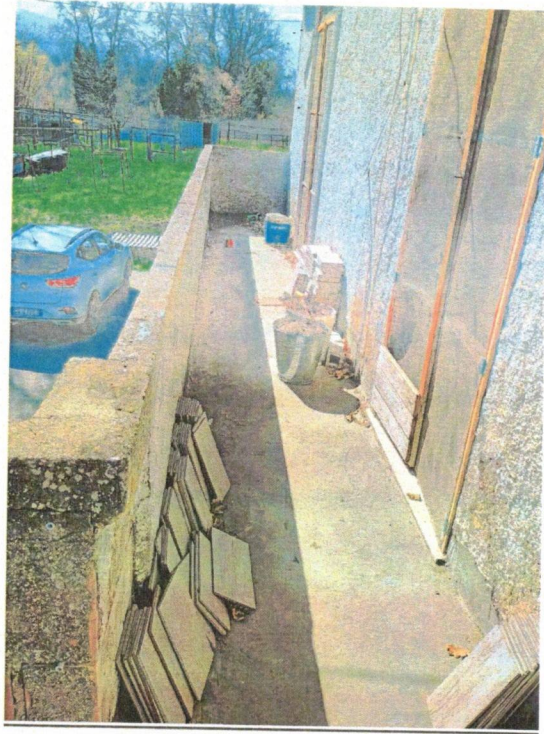


Foto n. 17: veduta terrazzo



Foto n. 18: veduta terrazzo

