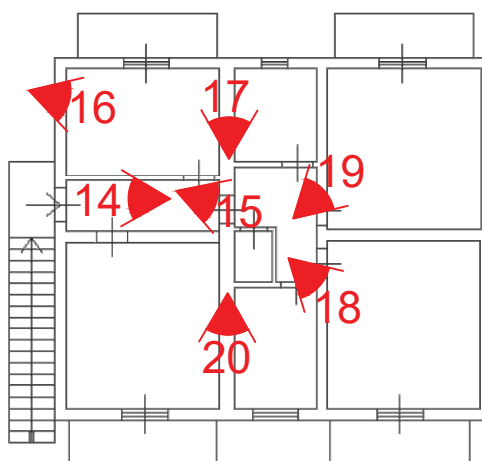
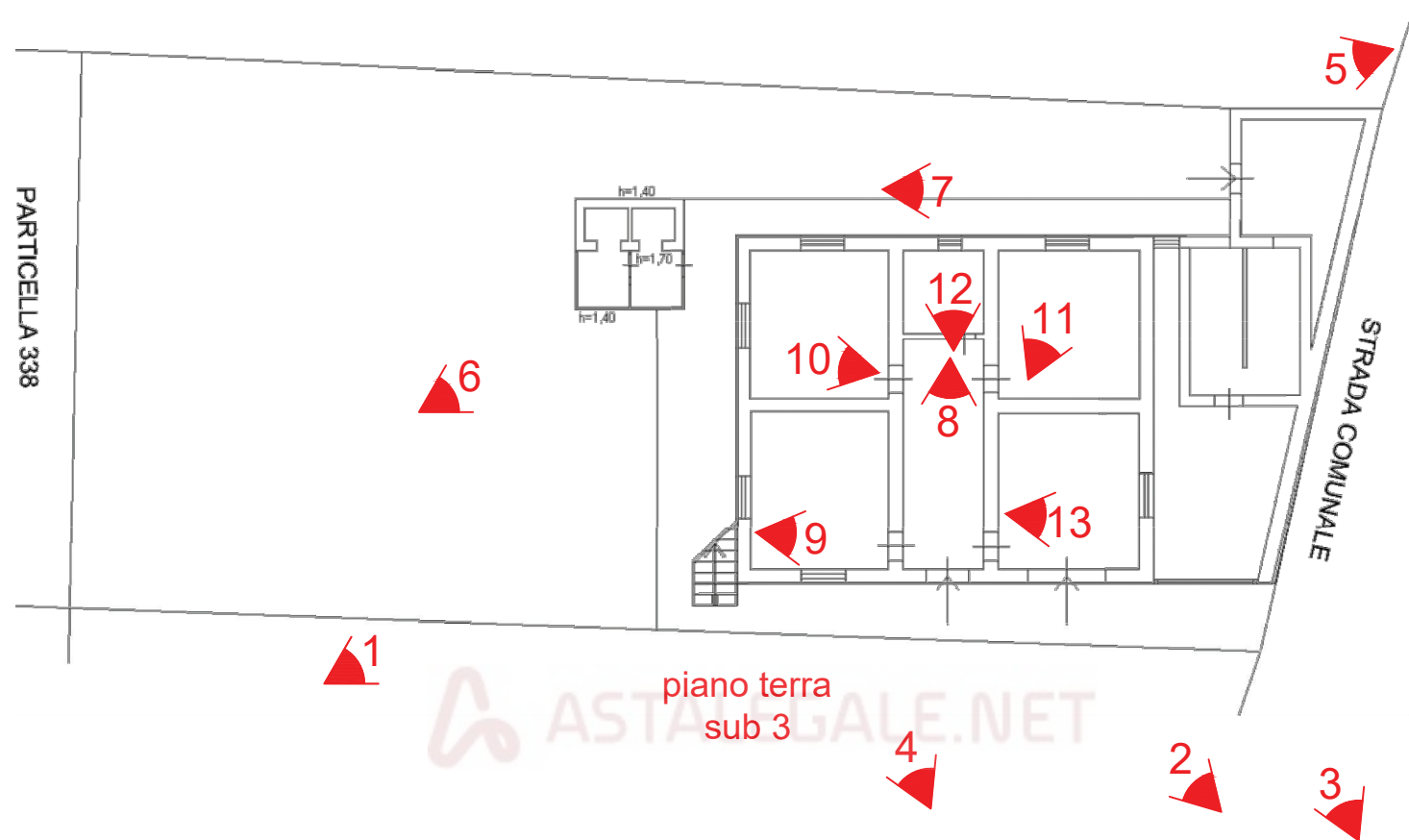


Punti di vista fotografici



piano terra
sub 3

piano primo
sub 4

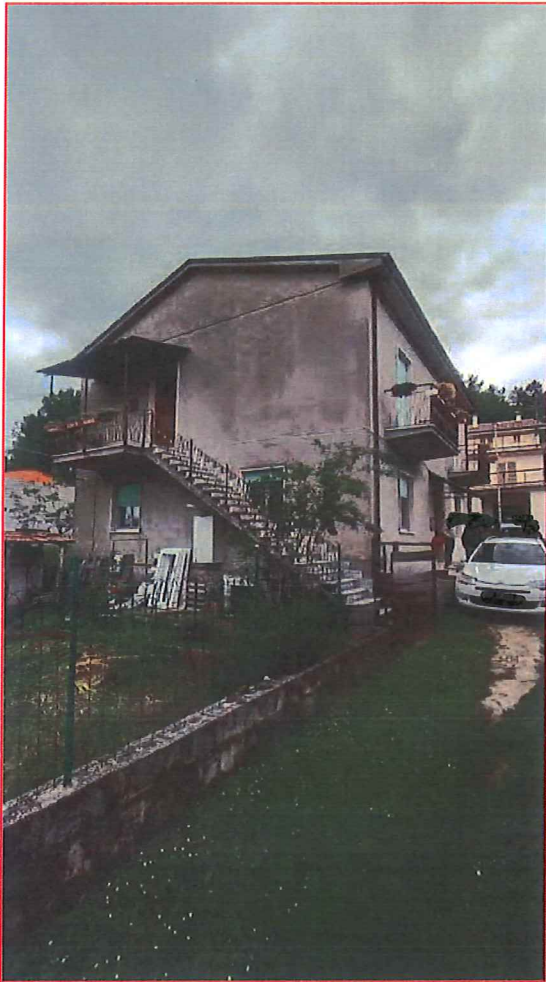


Foto 1



Foto 2

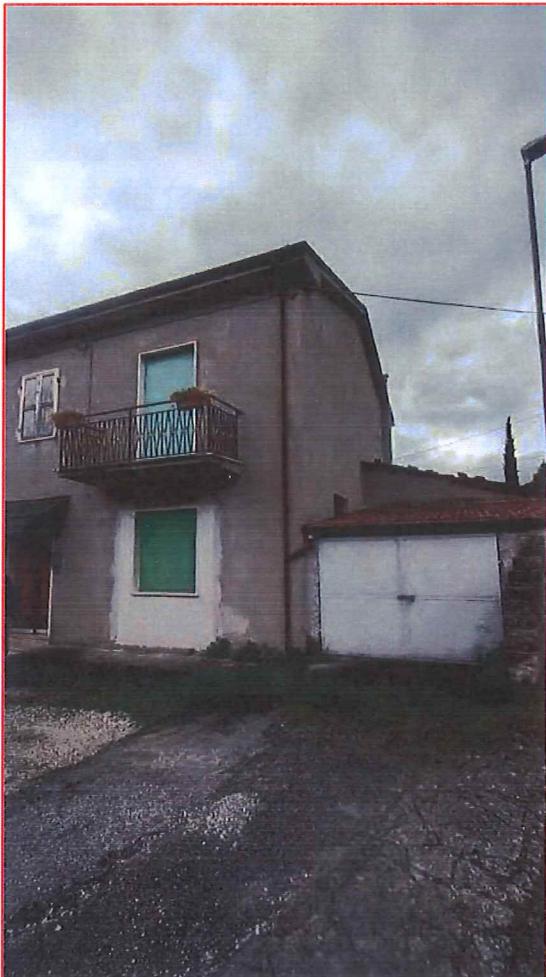


Foto 3

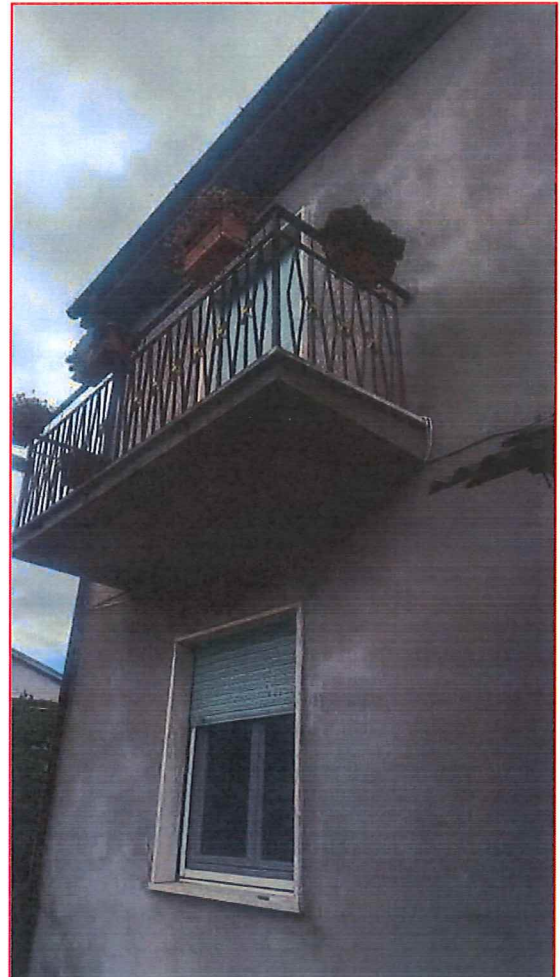


Foto 4

ASTALEGALE.NET



Foto 5 - Prospetto posteriore



Foto 6 - Legnaia sub 3

Sub 3 - piano terra



Foto 7 - Cantina esterna piano terra

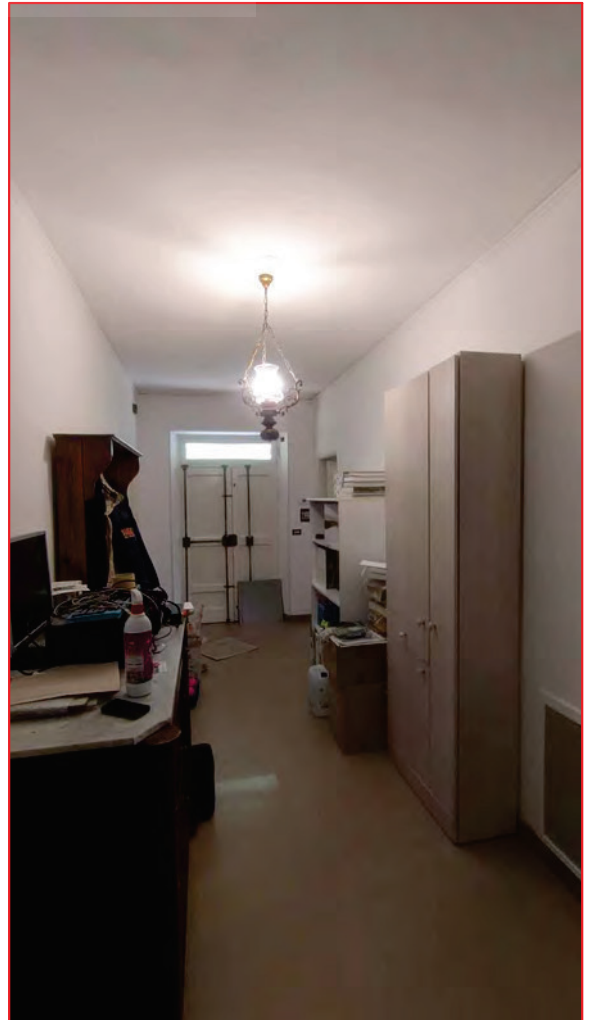


Foto 8 - Disimpegno piano terra



Foto 9 - Cucina piano terra

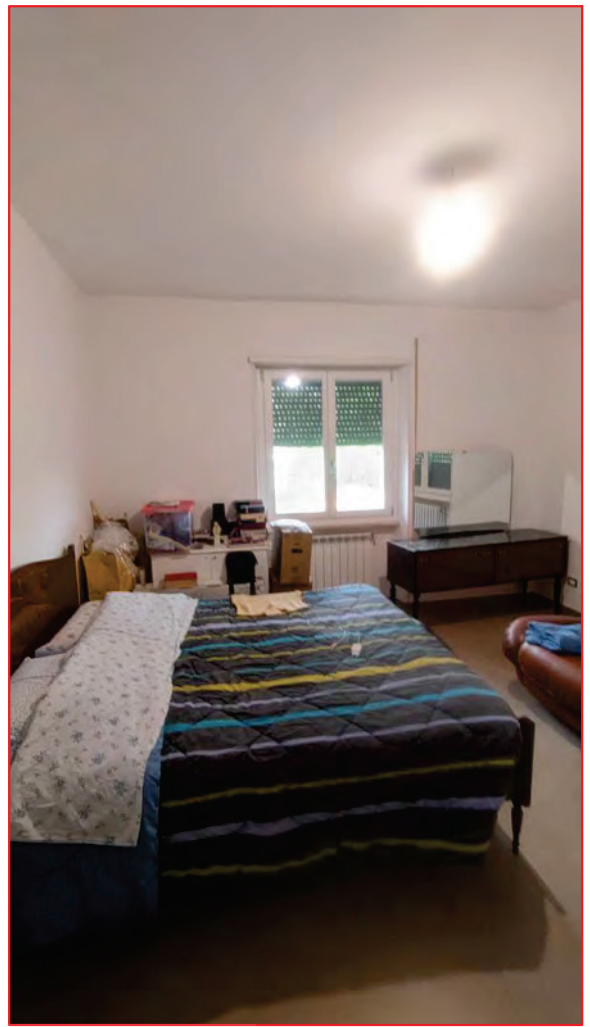


Foto 10 - Letto2 piano terra

Sub 3 - piano terra



Foto 11 - Letto1 piano terra



Foto 12 - Wc piano terra



Foto 13 - Cantina comunicante piano terra

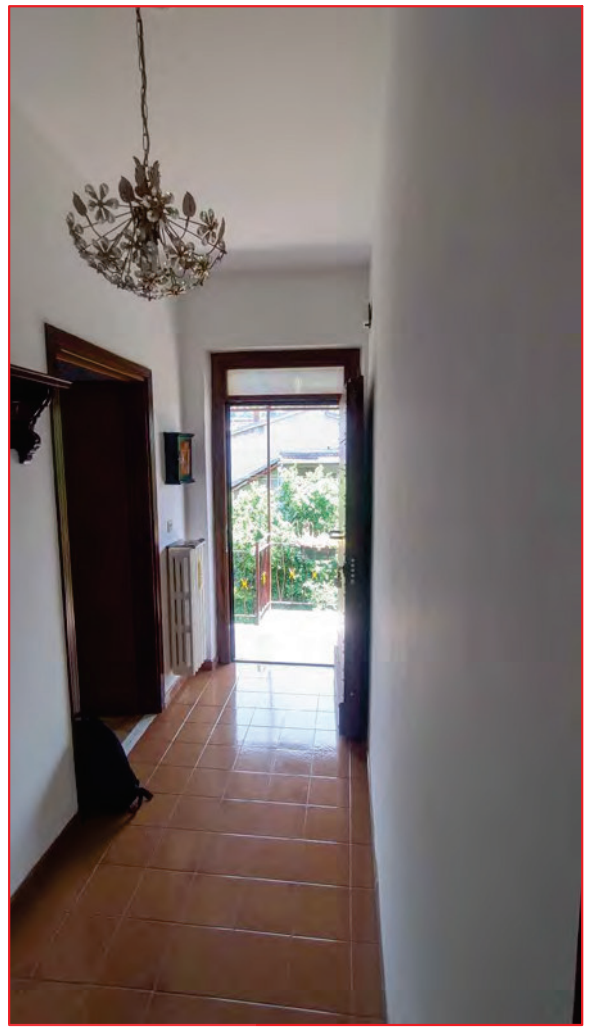


Foto 14 - Ingresso piano primo

Sub 4 - piano primo



Foto 15 - Disimpegno piano primo



Foto 16 - Cucina piano primo



Foto 17 - Wc piano primo

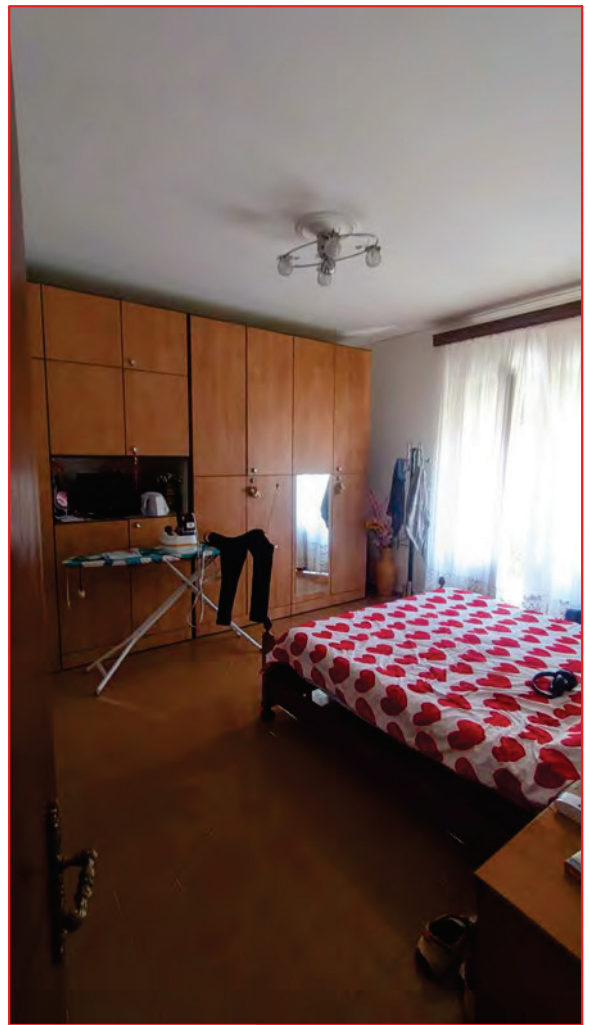


Foto 18 - Letto1 piano primo

Sub 4 - piano primo



Foto 19 - Letto2 piano primo

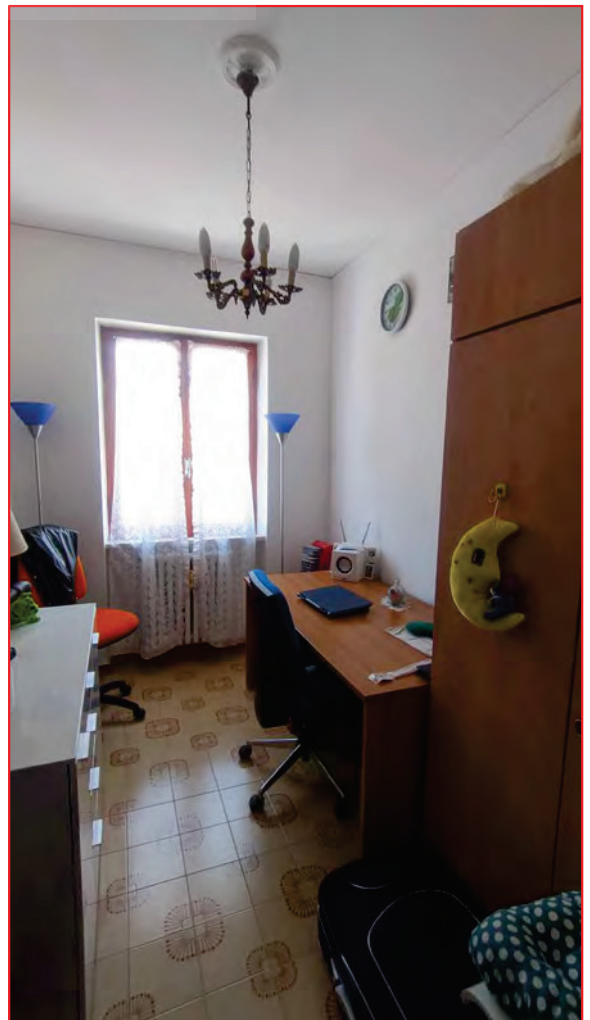


Foto 20 - Studio piano primo