

Documentazione fotografica



Foto 1 – Accesso da via Falcinello  
su Part. 928



Foto 1 – Esterno

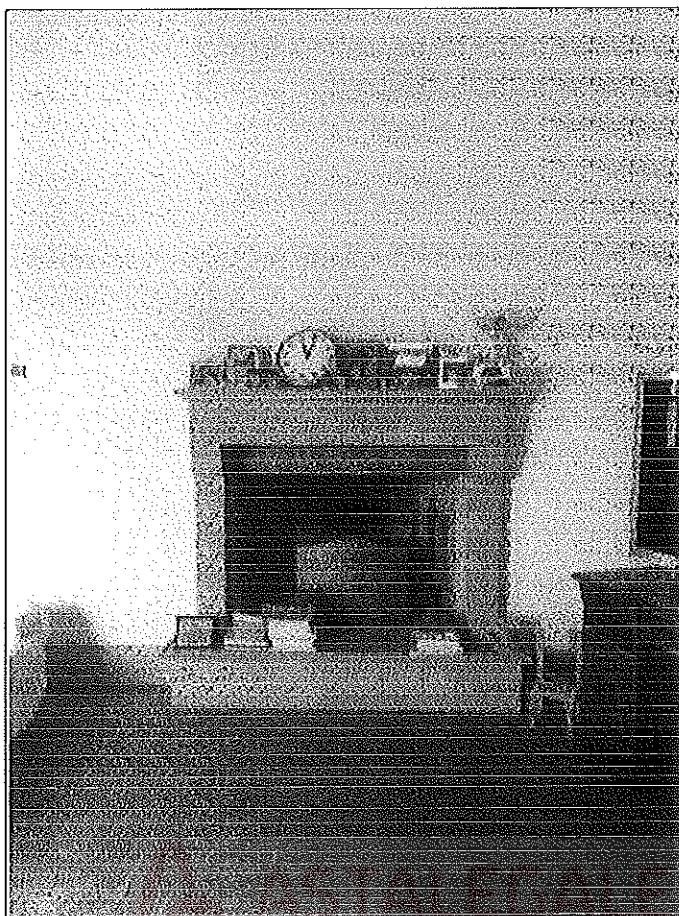
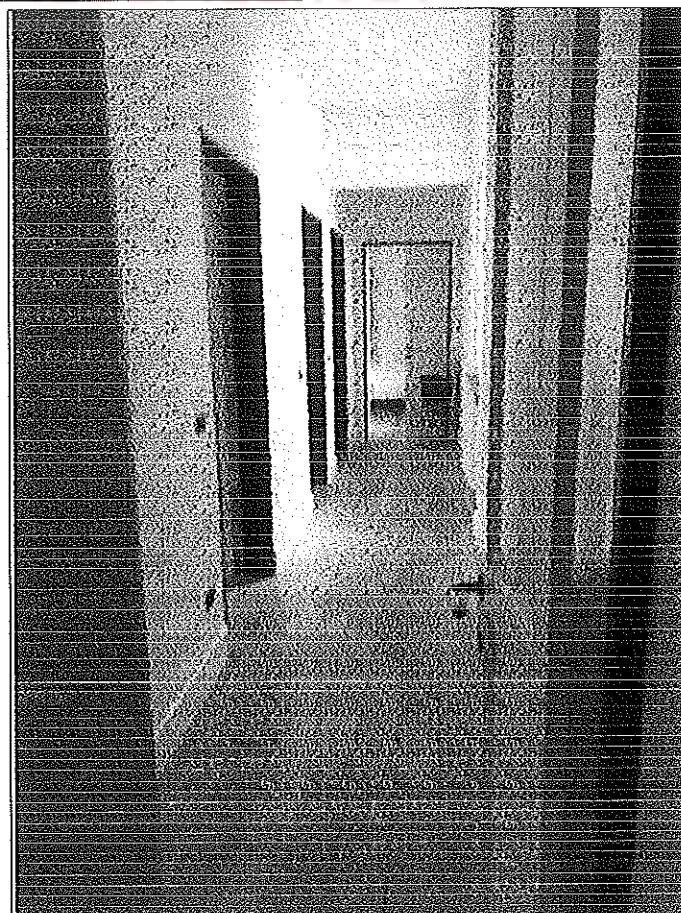


Foto 3 - 4 - Viste interni



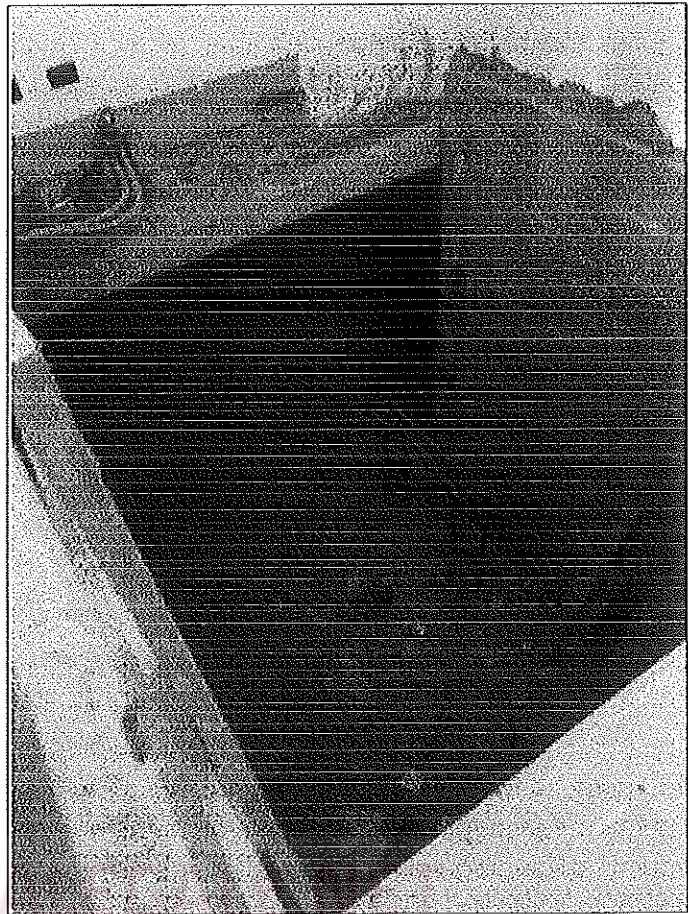
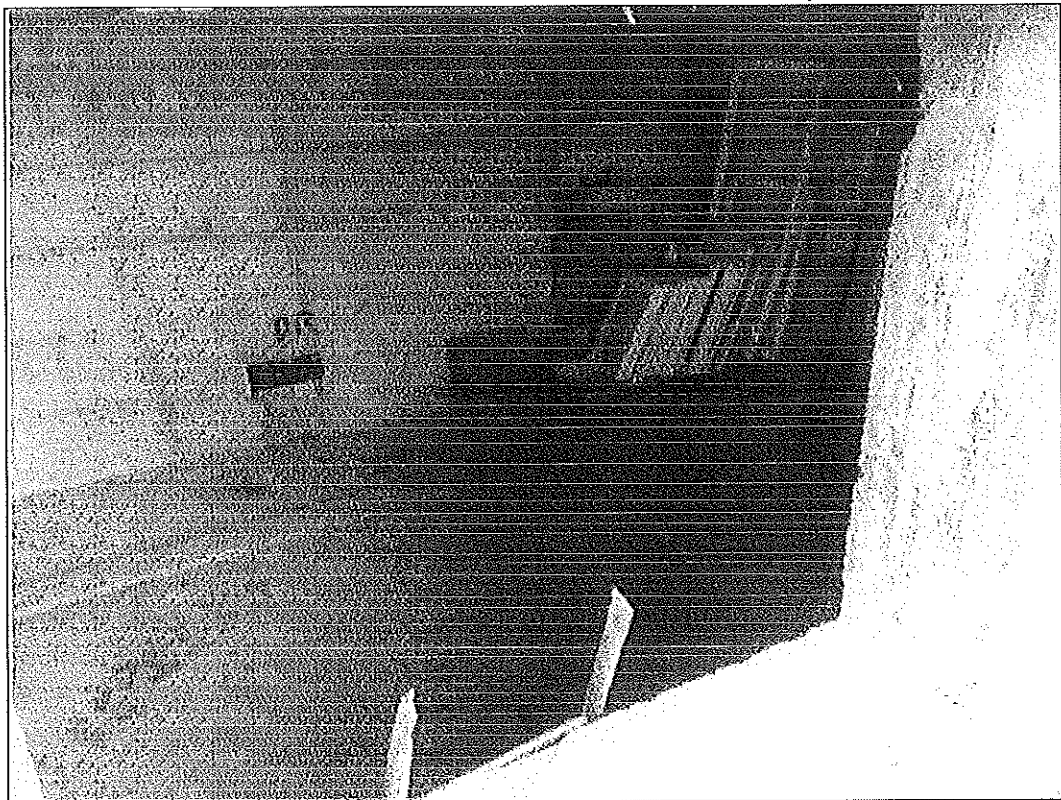


Foto 5-6 – Vista piano seminterrato



Documentazione fotografica

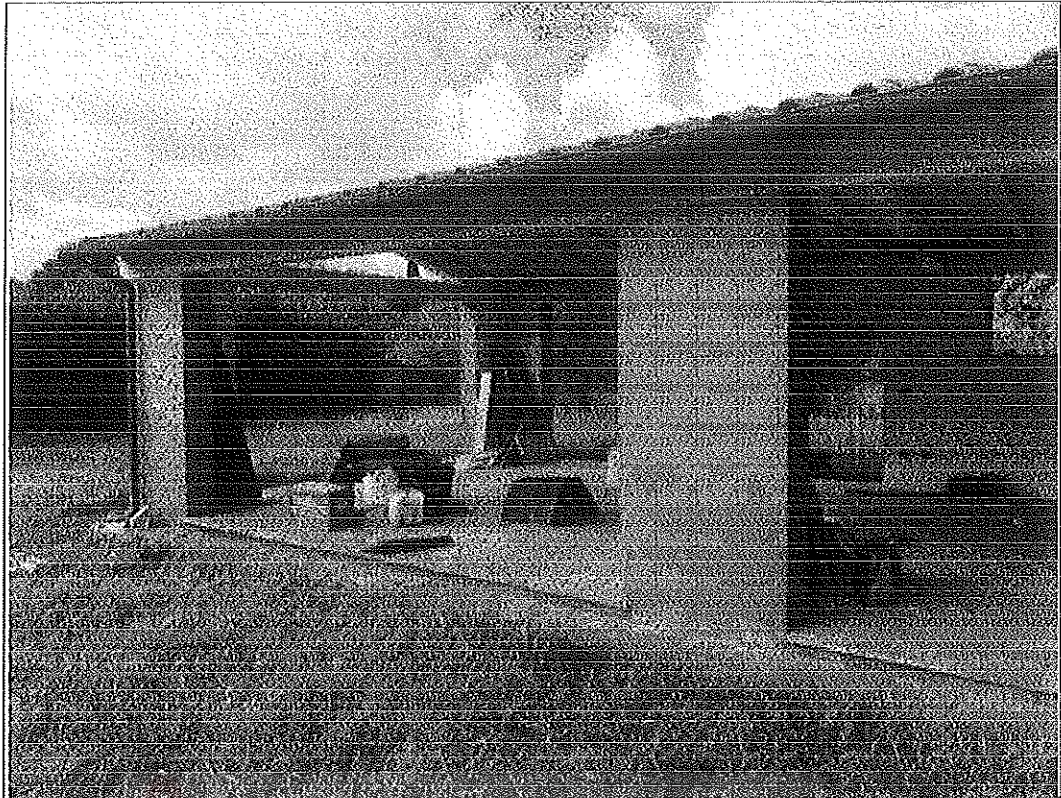


Foto 1 – 2 - Vista Immobile e giardino della part. 929



Documentazione fotografica

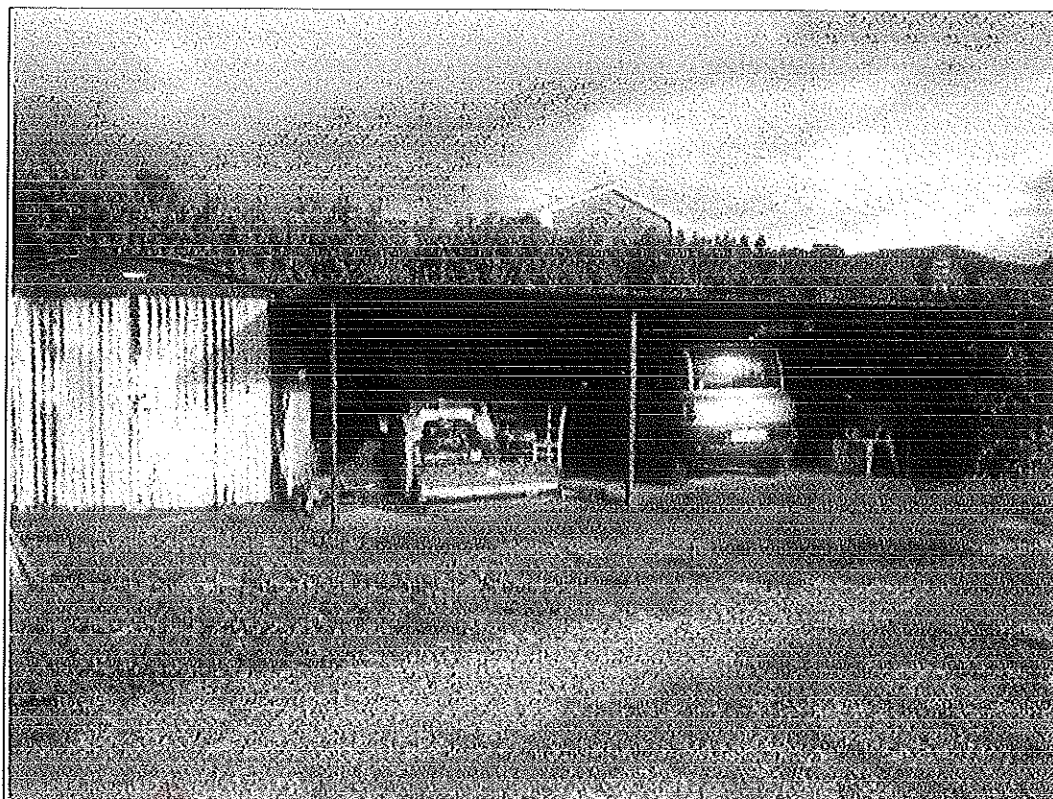


Foto 1 – Part. 618

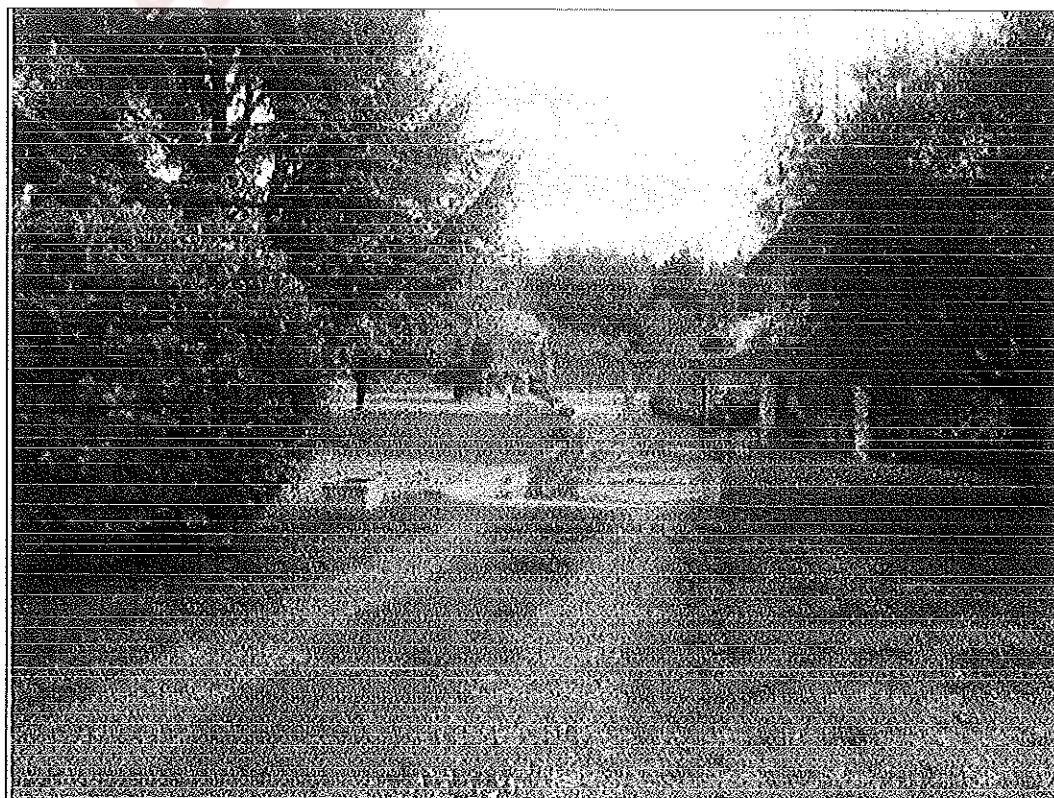


Foto 2 – Vialeto di accesso si Part. 929

Documentazione fotografica

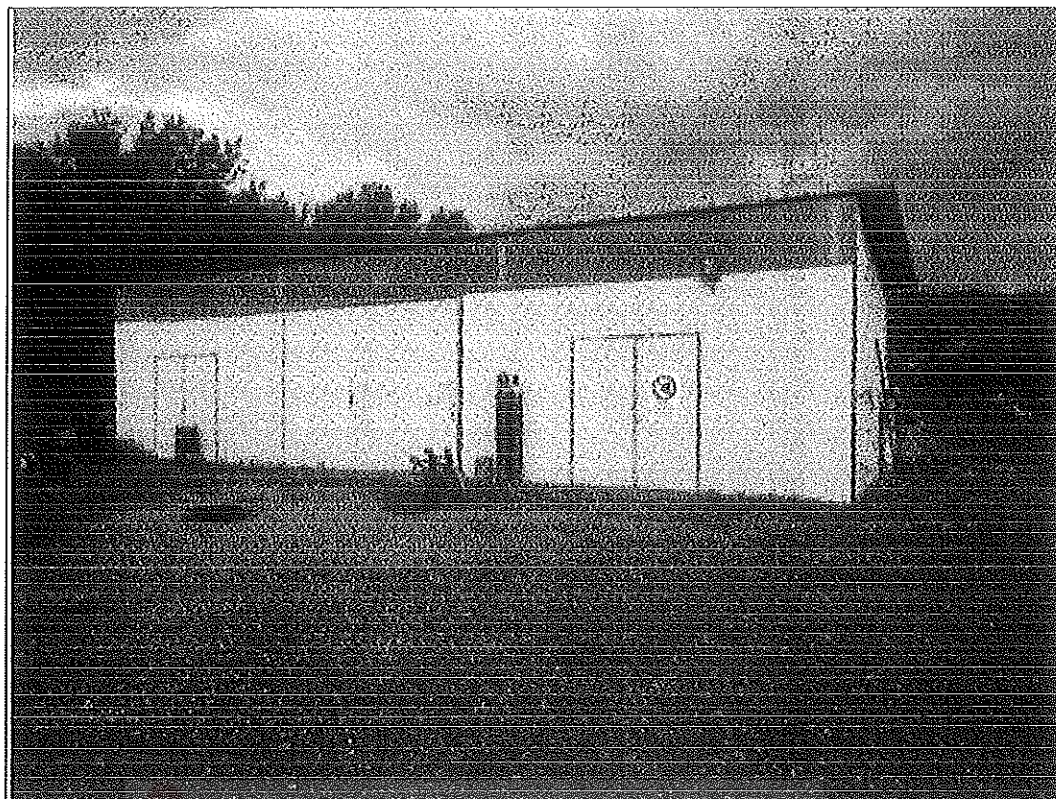


Foto 1 - Part.624

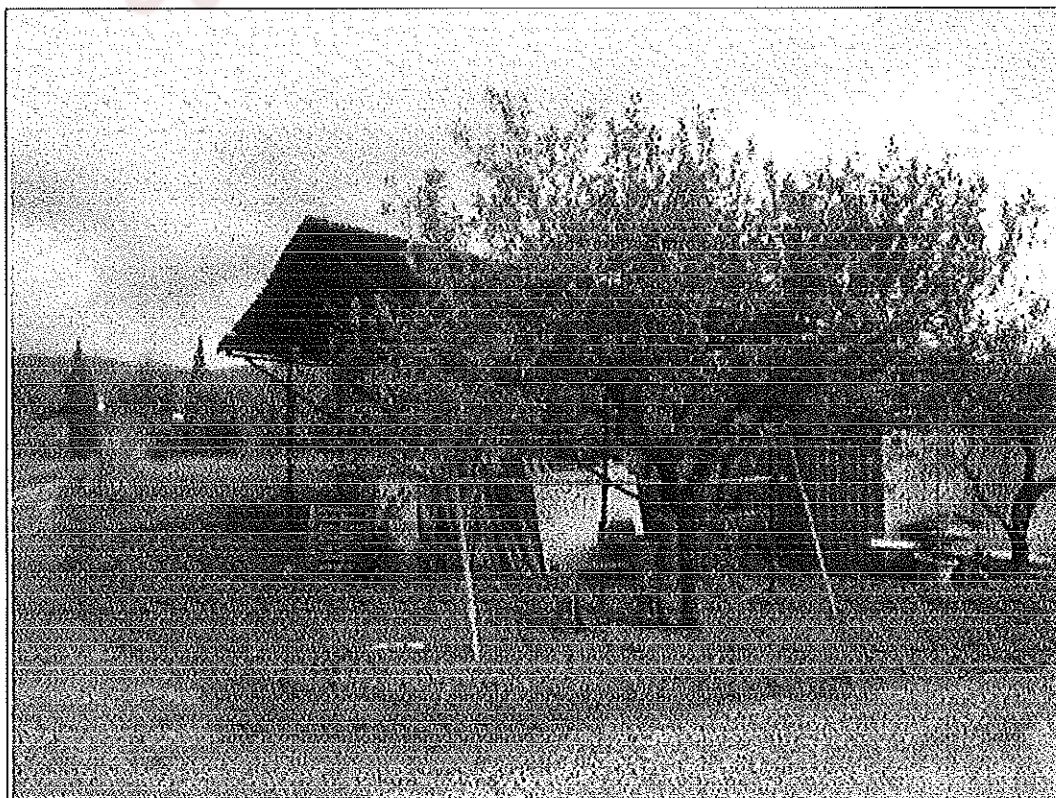


Foto 2 - Part.622



Foto 3 – Part.IIe 621-620-619



Foto 3 – Part. 620

Documentazione fotografica

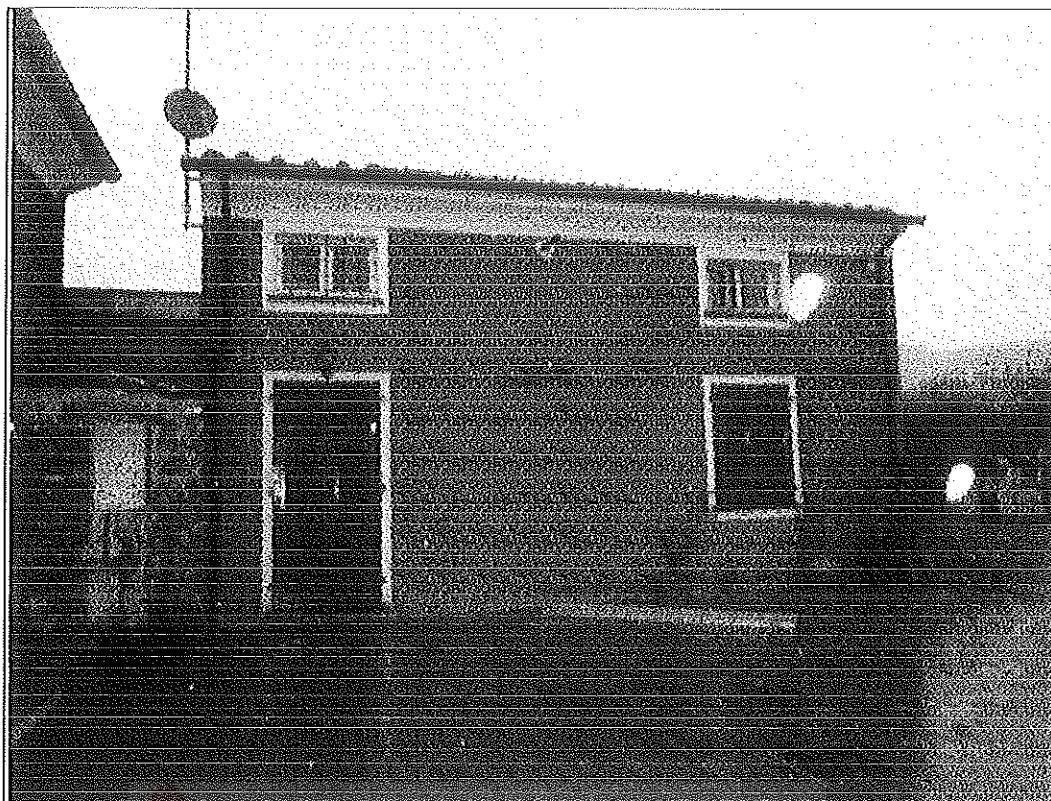
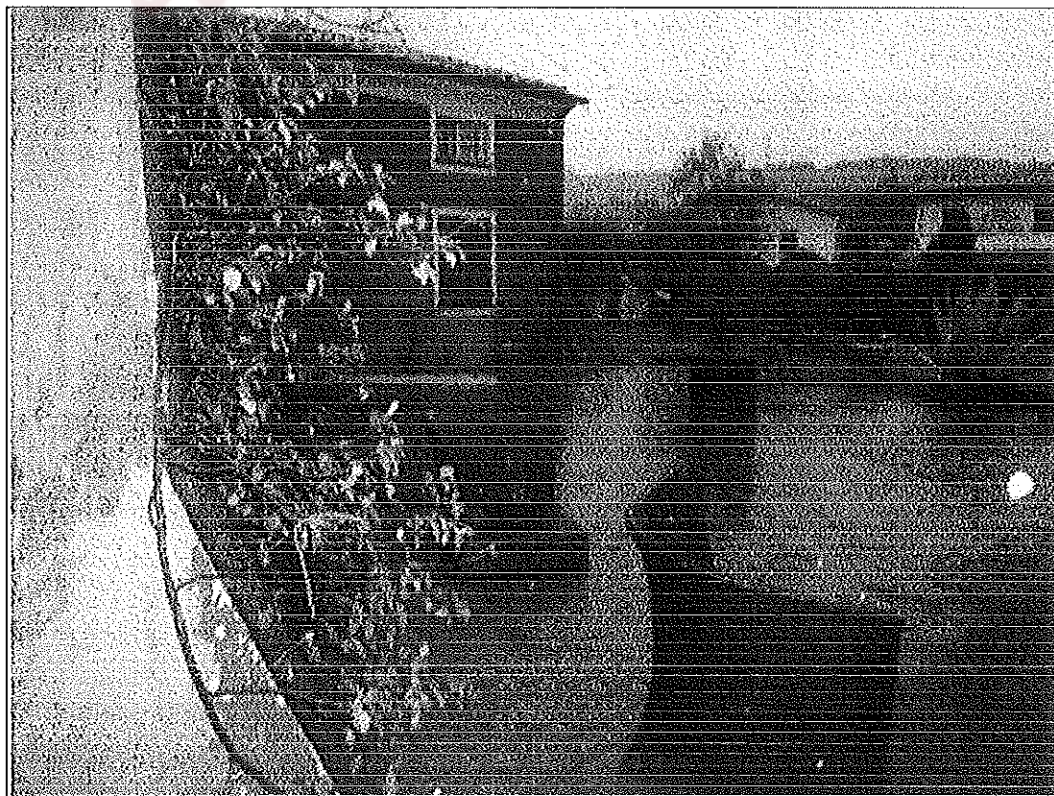


Foto 1-2- Viste esterni



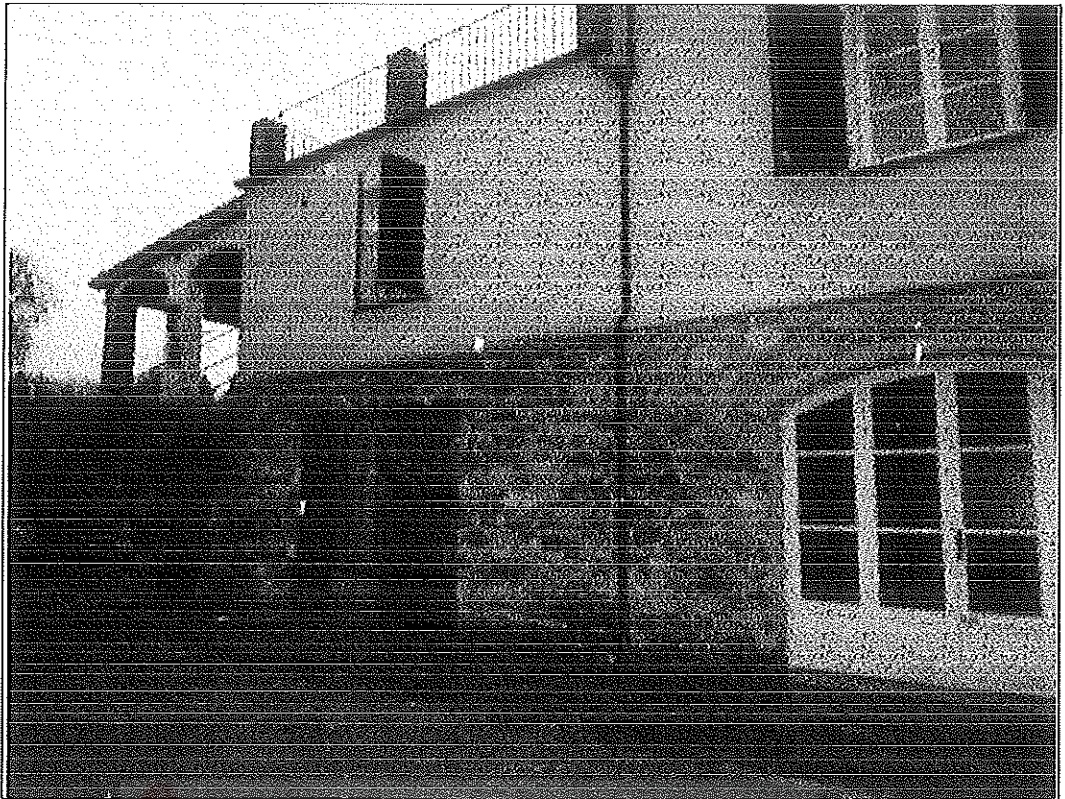


Foto 3 - 4 - Viste esterni



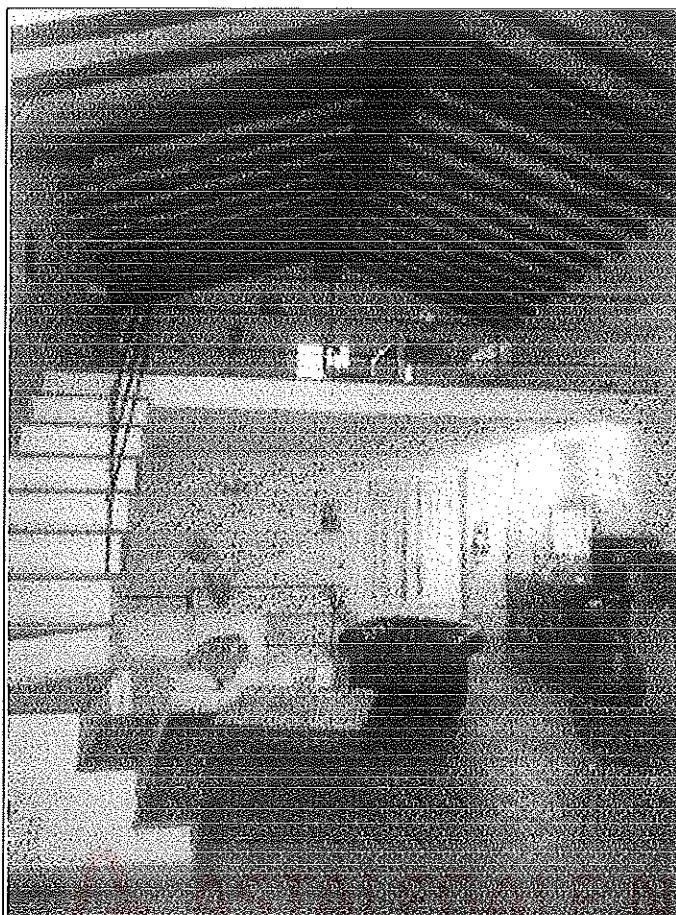
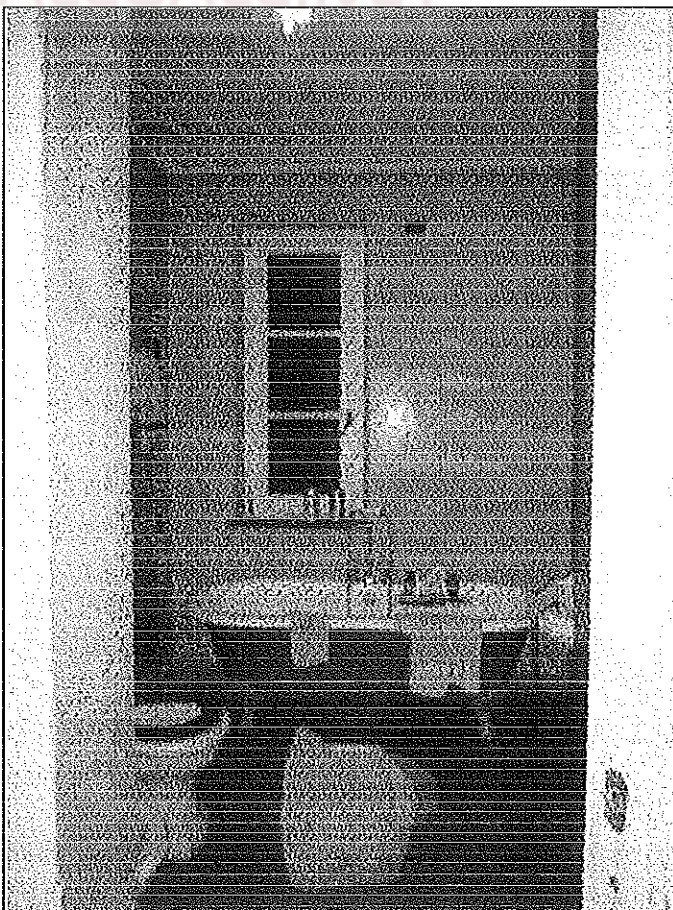


Foto 5 -6 – Viste interni



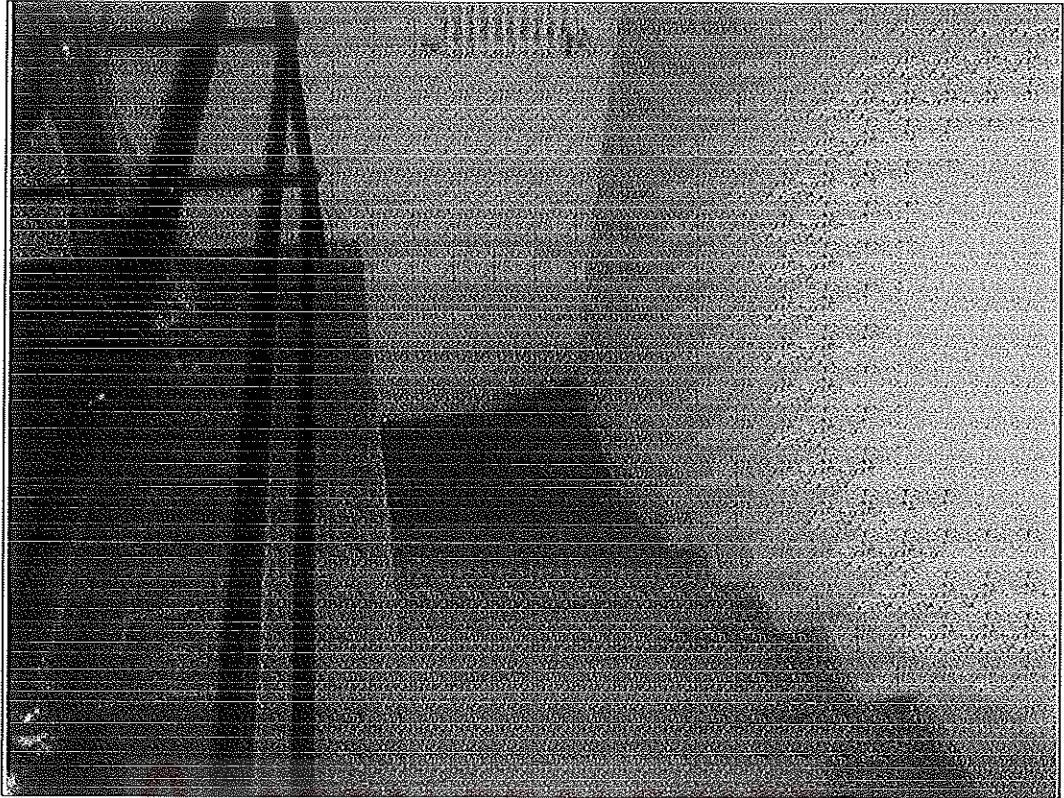


Foto 7 – Rampa per il piano S1



Foto 8 – Vista cantine piano S1